



3M™ Speedglas™ Welding Helmet 9100XXi FX Air

To optimise the effective lifetime of your welding equipment and avoid the additional cost of replacement, regular maintenance is important. Replace all damaged parts immediately to ensure correct levels of protection. Below is a helpful overview; always read and follow User Instructions.

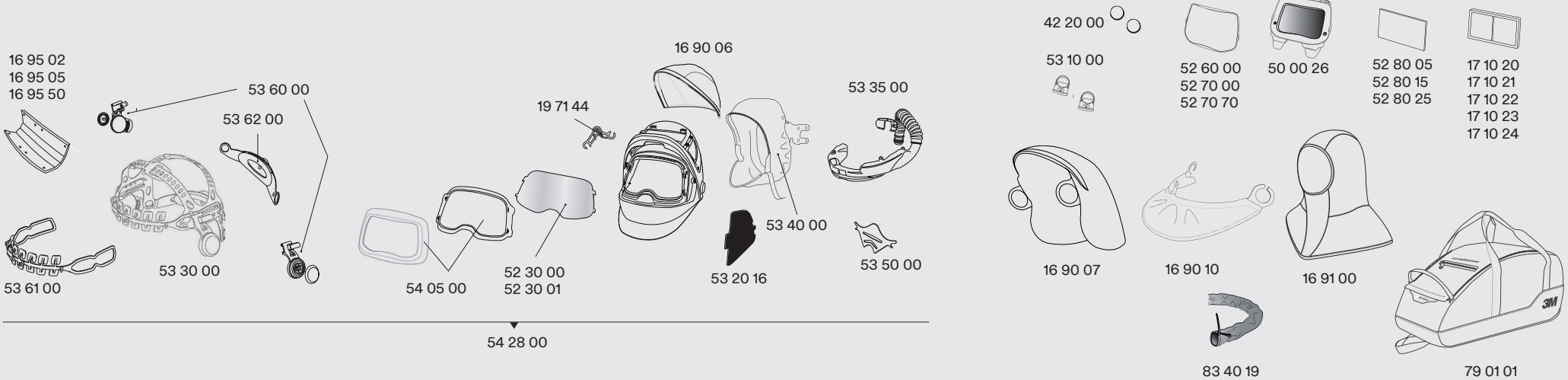
Before use

- ① **Helmet and head harness.** Inspect for cracks or any damaged parts. Replace if needed.
- ② **Cover lenses and visor.** To provide the best possible vision, they should be clean and without scratches.
- ③ **Face seal.** If the face seal is damaged there is a great risk that contaminated air will get inside the helmet. Verify it's in position and free from splits and tears.
- ④ **Welding filter.** Ensure that the low battery indicator is not flashing and check that the sensors are clean and uncovered.
- ⑤ **Breathing tube.** Confirm that the tube is not damaged or leaking any air. To extend the life of the breathing tube, use a tube cover or a heavy-duty breathing tube.

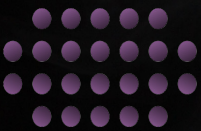
After use

- ① **Clean the helmet.** Wipe with a moist tissue or cloth, both inside and outside the helmet. If you suspect that the inside of the breathing tube is dirty, it must be changed. DO NOT rinse, immerse in water or clean with solvents.
- ② **Face seal and sweatband.** Remove for additional cleaning as needed and replace if they have splits or tears or whenever they become unhygienic.
- ③ **Cover lenses and visor.** Clean with a soft cloth and replace if any pits or scratches occur.
- ④ **Breathing tube.** Replace if damaged, deformed or leaking any air.
- ⑤ **Storage.** Store the helmet in a dry, clean area away from direct sunlight, high temperatures and solvents.

Spare parts and consumables



Part No	Description	Part No	Description	Part No	Description
16 90 06	Head Cover Small 9100 FX	42 20 00	Battery Lithium 9100, 100 & 9000 Pk=2	53 35 00	Air Duct Assembly 9100 FX Air
16 90 07	Head Cover Large 9100 FX	50 00 26	Lens Welding 9100XXi Speedglas	53 40 00	Face Seal 9100 FX Air
16 90 10	Throat Protection 9100	52 30 00	Visor Plate 9100 FX & MP Pk=5	53 50 00	Air Deflector 9100 FX Air
16 91 00	Head Cape Tecaweld	52 30 01	Visor Plate Anti-Fog 9100 FX & MP Pk=5	53 60 00	Head Harness Pivot Mechanism 9100
16 95 02	Sweatband 9100 & 9100 FX Pk=2	52 60 00	Lens Cover Outer Standard 9100 Pk=10	53 61 00	Head Harness Front Part 9100
16 95 05	Sweatband 9100 & 9100 FX Pk=5	52 70 00	Lens Cover Outer Hard Coated 9100 Pk=10	53 62 00	Head Harness Back Part 9100
16 95 50	Sweatband 9100 & 9100 FX Pk=50	52 70 70	Lens Cover Outer High Heat 9100 Pk=10	54 05 00	Front Cover Kit 9100 FX & MP
17 10 20	Lens Magnifying 1.0X G5-01, 9100, 100 & 9000	52 80 05	Lens Cover Inner 9100V Pk=5	54 28 00	Helmet Welding 9100 FX Air Exc Lens
17 10 21	Lens Magnifying 1.5X G5-01, 9100, 100 & 9000	52 80 15	Lens Cover Inner 9100X Pk=5	79 01 01	Carry Bag Speedglas
17 10 22	Lens Magnifying 2.0X G5-01, 9100, 100 & 9000	52 80 25	Lens Cover Inner 9100XX/XXi Pk=5	83 40 19	Breathing Tube Cover Flame Resistant 9100 FX Air
17 10 23	Lens Magnifying 2.5X G5-01, 9100, 100 & 9000	53 10 00	Holder Battery 9100		
17 10 24	Lens Magnifying 3.0X G5-01, 9100, 100 & 9000	53 20 16	SideWindows Cover Plate 9100 FX & MP Pk=2		
19 71 44	Flip Up Mechanism 9100 FX Pk=2	53 30 00	Head Harness 9100		



SPATA

Speedglas Powered Air Training Academy

The **Speedglas Powered Air Training Academy (SPATA)** has been launched in Australia and NZ to provide workplaces with online video training modules to educate and train staff on the proper use, care, and maintenance of their welding respiratory protective equipment. Get the most out of your gear and sign up for **FREE** today!

NEW

www.apexweldingsafety.com.au/spata

